

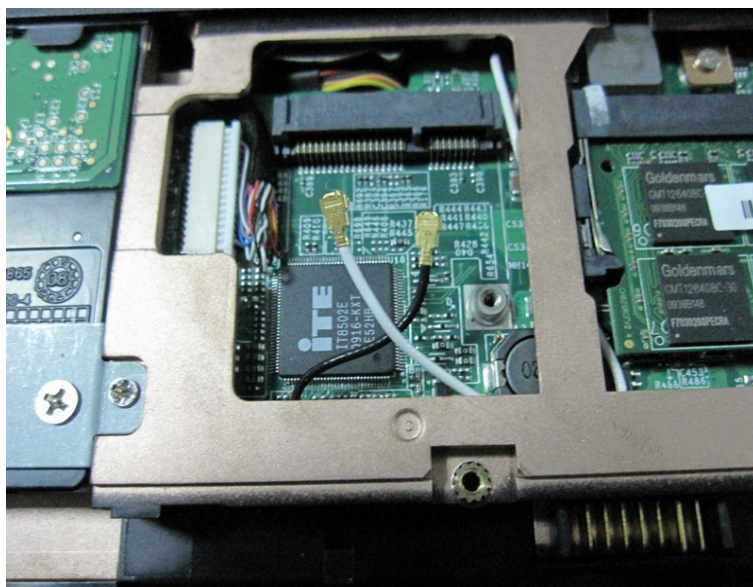
AR5B95 User Guide

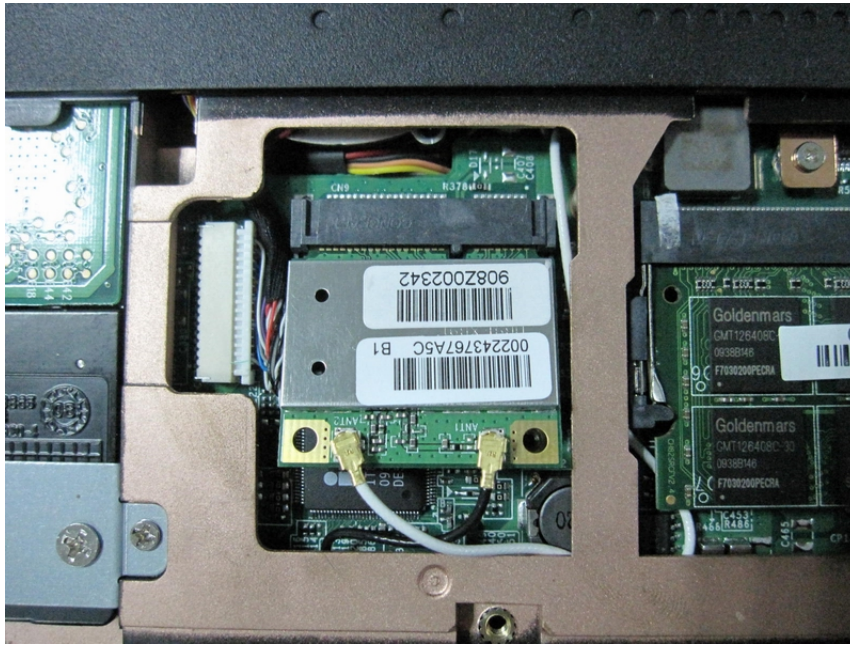
1, Assemble the module

Step A, Prepare a piece of module and the whole set of Notebook, as below pictures,

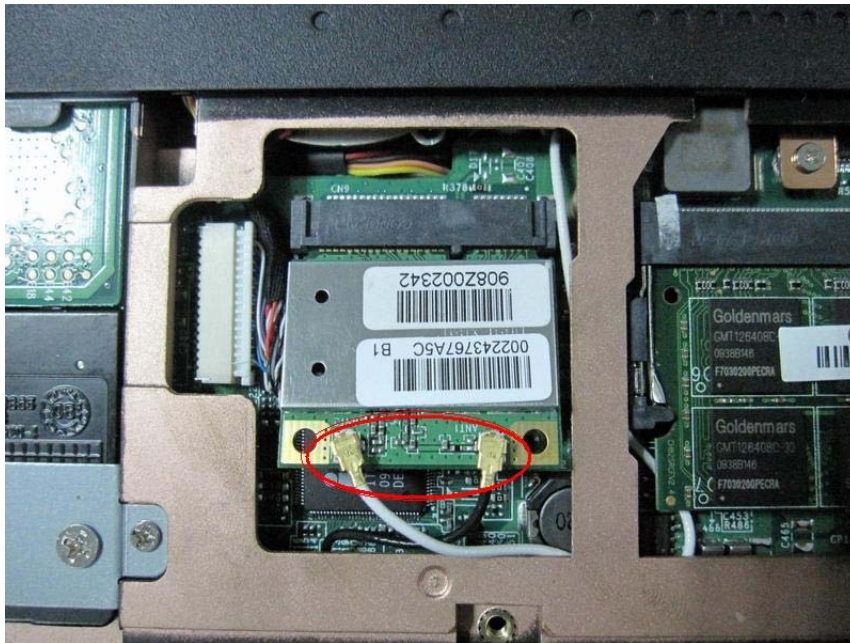


Step B, Insert the module into the PCI express interface ,as below picture,





Step C, assign the Antennas (Aux. and Main)to the ipex connectors respectively,

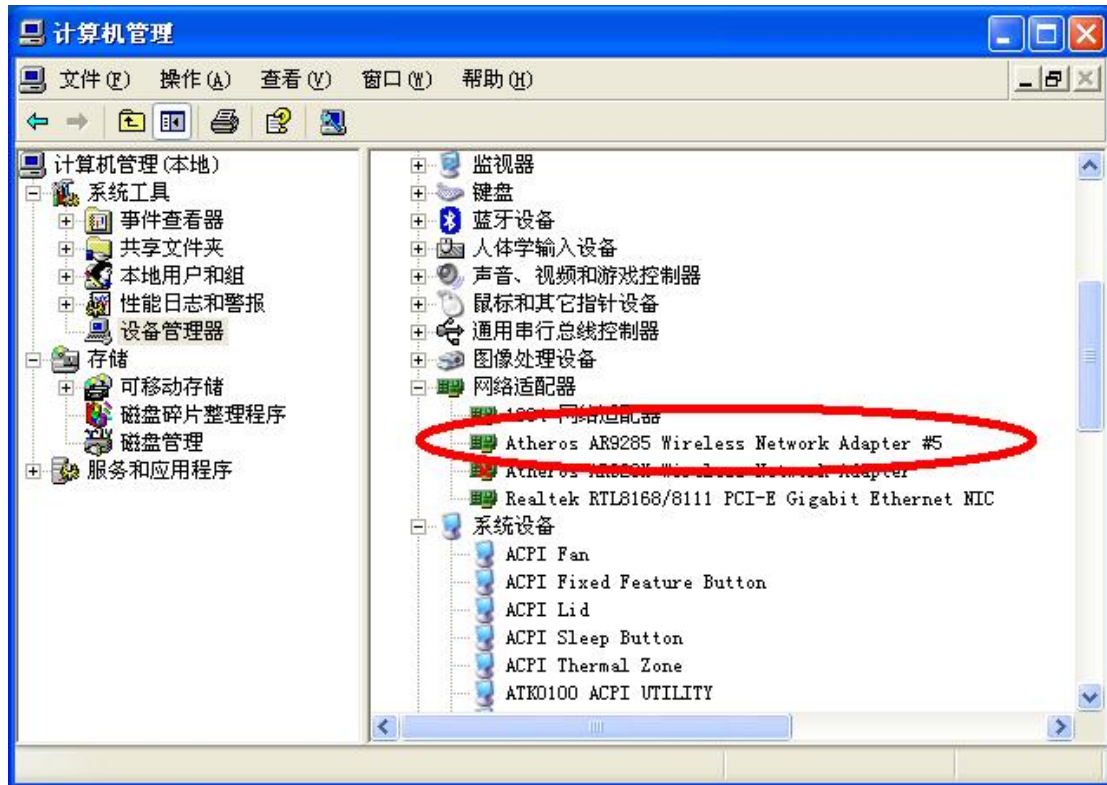


2, Apply/Use the wifi function,
Step1, Boot on the system and upgrade the wifi driver ,such as the following picture,



Step2, check it out weather the driver is upgraded completely or not ,also you can refer to the following operations ,





Step3, connected wireless router,





Step4, now , you can use Internet freely .

For example: Ping www.hao123.com

```
C:\Documents and Settings\WNC2>ping www.hao123.com

Pinging hao123.n.shifen.com [220.181.43.130] with 32 bytes of data:

Reply from 220.181.43.130: bytes=32 time=32ms TTL=55
Reply from 220.181.43.130: bytes=32 time=28ms TTL=55
Reply from 220.181.43.130: bytes=32 time=29ms TTL=55
Reply from 220.181.43.130: bytes=32 time=32ms TTL=55

Ping statistics for 220.181.43.130:
    Packets: Sent = 4, Received = 4, Lost = 0 (0% loss),
    Approximate round trip times in milli-seconds:
        Minimum = 28ms, Maximum = 32ms, Average = 30ms
```